

**We're Making  
a Splash and  
Having a Ball!**

# **FONTAINEBLEAU SWIM & TENNIS CLUB**

## **Monthly Newsletter**

**Volume 1,  
Issue 1  
January, 2006**

## **It's a New Year... A New Look...and A New Board**

**O**ut with the old and in with the new. To celebrate a new year, FSTC has a whole new attitude. We've got a new board, a new budget, a new newsletter look, and soon we'll have a 'new' pool! It's going to be a great year, so tell your neighbors to come join us because in 2006 "We're Making a Splash and Having a Ball!"

The 2006 Board Members and their positions are:

Rudy Nydam	President
Karen Angel	Vice President
Kyle Kolvereid	Treasurer
Penny Forman	Communications Director
Genie Hooper	Membership Director
Kathy Florence	Social Director
Tim Yelton	Tennis Director
Kimberly Cooper	Clubhouse Director
Trey McDonald & Joel Alvis	Pool Directors
Christian Matulich & Bart Smith	Grounds, Maintenance, Security and Playground Directors

The new Board met for the first time on January 10 and is gearing up for the best year ever at our Fontainebleau Swim & Tennis Club!

## Membership Approves 2006 Budget and Special Assessment

At the annual membership meeting on December 17, FSTC members voted to raise membership dues 10% effective with the 2006 dues. As explained previously, the Club needs these additional funds to operate in 2006 and to continue improvements. These improvements will continue to keep our neighborhood club viable and continue to raise our home values. The family membership fee will now be \$550 and the senior and single membership fee will be \$330.

The membership also approved a motion for a special assessment of \$200 for a family membership and \$100 for seniors and singles in 2006 and an assessment, amount to be determined, in 2007. The 2006 special assessment was approved for expenditures relating to the pool. The pool will be resurfaced with pebble sheen white diamond plaster which is warranted for 15 years. The cost is \$18,575. Because 25% of the total cost is due upon contract execution, 50% due upon completion of prep work, and 25% are due upon completion of the interior finish; timely payment of everyone's assessment is needed. Work will start in mid-March with a completion date of early April. The company performing the work is Olympic Pool Plastering and if you visit their website at [www.pebbletec.com](http://www.pebbletec.com), you will see examples of their work.

The 2007 assessment will be used for tennis court improvements. The Tennis Committee will meet with tennis court contractors to receive resurfacing bids. The Committee consists of Tim Yelton, Christos Kiriazis, Bart Smith, Christian Matulich, and Karen Angel. You will find updates on their findings in future newsletters.

### **Dues are in the Mail** It's that time of the year.

Your annual membership statement was mailed recently. The annual membership is due by April 1 and the assessment is due by March 1. Please pay on a timely basis as the Club has large payments due in February for the pool maintenance contract and in March for the pool resurfacing. For questions, contact Kyle Kolvereid.



### 2006 Membership & Assessment Fees

Membership Fees	
Family	\$550
Single/Senior	
<b>\$330</b>	

### Assessment Fees

Family	\$200
Single/Senior	

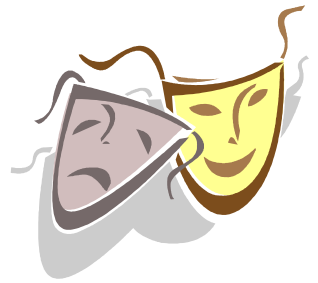
**WE'RE MAKING A SPLASH AND HAVING A BALL!**

FSTC Members:

2006 is going to be an exciting time for our club. With the passing of the dues increase and assessment, you have all made an important move towards making necessary improvements that we can all be proud of. I would like to thank Karen Angel for bringing Olympic Pools, and their new "PebbleTec" resurfacing to our attention. The work is being scheduled to begin in March with completion in time for the opening of pool season. The new surface will give us a pool we will all want to brag about. We have a great membership, and the changes will make our club more inviting to attract our neighbors that have been thinking about joining.

This an exciting time for FSTC. Feel free to contact any of the board members if you have an idea you would like to share.

Rudy Nydam, President



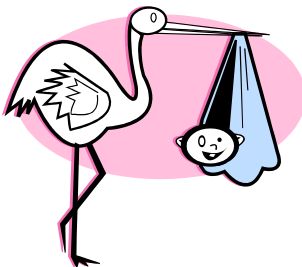
## Fontainebleau Night at the Theatre

The Marcus Jewish Community Center will present *The Ride Down Mount Morgan*. It's billed as a wickedly intelligent, savage satire and was written by Arthur Miller, renowned playwright of *Death of a Salesman*. The show stars well-known Atlanta actor Chris Kayser, the brother of Fontainebleau member, Mary Sellers.

We have 10 second-row tickets reserved for Fontainebleau on Saturday, February 25 at 8 p.m. Each is \$30.90. The first ten people interested in attending, should call Kathy Florence at 770-396-9924. We'll make it a great night and meet prior to the show at someone's house. Then, we'll follow with dessert after the show.

The show runs February 2 - 26. Visit their website at [www.atlantajcc.org](http://www.atlantajcc.org) or call 770-395-2654 for more details.

## Member News



It's a GIRL! Natalie Hines Duke was born on Saturday October 22nd at 8:33am. Natalie was 8lbs., 9oz., and was 21.5 inches long at birth. It's the third girl for Michelle and Bill. Her sisters, Addison, 6, and Elizabeth, 3, are great helpers and will be good babysitters in years to come.

Fontainebleau Tennis January -2006

**THEY'RE WINNING!**

**Congratulations to our Ladies USTA 2.5 Team!** They are currently ranked #1 in their Division. With just a few weeks to go "...they could go all the way!"

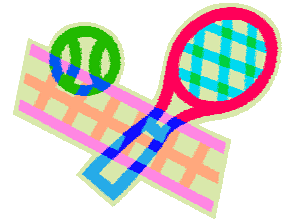
**"Now that's Bleau Tennis"**

**New Year / New Season**

**ALTA Winter Mixed Doubles Play at Fontainebleau**

**"A" and "B" Level Competition begins this month!**

After the first week the "B" Team has started 5-0 and the "A" Team started 4-1. Come down any Sunday afternoon this month and see one of our teams on the court. Its good fellowship and you're guaranteed to see some great tennis.



**Spring ALTA – Teams are Forming!**

If you're interested in playing tennis this spring, contact a Tennis Captain or sign-up at the Bulletin Board near the tennis courts. ALTA Spring Teams are forming. Captains are:

Men's B team	Christos Kiriazis
Men's C Team	Trey McDonald
Women's B Team	Jennie McDonald
Women's A Team	Lori Cantey and Amy Sims

Contact Tim Yelton if you have any questions (Tel: 678-443-3545 or e-mail [tayelton@bellsouth.net](mailto:tayelton@bellsouth.net)). Men's Spring Roster is due to ALTA on January 26<sup>th</sup>. Ladies Spring Roster is due to ALTA on January 30<sup>th</sup>. Men's spring season starts March 18<sup>th</sup> and the Ladies starts March 19<sup>th</sup>. The regular season lasts 7 weeks.

If you have Tennis information that you think the Tennis Director should know about, please contact Tim Yelton at: [tayelton@bellsouth.net](mailto:tayelton@bellsouth.net).

**Go Bleau!!**

*Newsletter Information: If you know of any member who is not receiving their newsletter, please email Penny Forman at [fbleaunews@aol.com](mailto:fbleaunews@aol.com) or call 770-804-0790. Thanks! Also the deadline for article submission is the first Friday of each month to [fbleaunews@aol.com](mailto:fbleaunews@aol.com). Please send school news, community news, or any other news you'd like to share with your neighbors.*